



Meeting #1: God's Plan to Save Me

Homework



Anchoring in Christ Character Activity

Family Connection Worksheet: Patience _____

Adventurer Pledge



Activity Book Page 1-4
Completes requirements for Basic I. _____

God's Plan to Save me



Activity Book Pages 6-10 color pages & use to share with someone how Jesus loves them!
Completes requirements for My God I and Friend of Jesus #1. _____

Meeting #1: God's Plan to Save Me

Classwork



Jesus Loves You & Me Craft/Activity

Talk about how Jesus loves each of us. Make a card for and visit a shut-in or older person from church or community.

Completes requirements for Friend of Jesus #4. _____

Adventurer's Invitation Craft

Complete the Adventurer Club invitation card provided by your teacher and use it to invite a friend to Adventurers. Or make your own card and invite a friend to a church meeting.

Completes requirements for Friend of Jesus #2 and part of Handicraft #1 for Meeting #18. _____

Talking with your Friend

Talk about prayer. We become closer friends with someone by talking to them. We share exciting things that are happening in our life, talk with them about challenges that we are facing and ask for help with our problems. God wants to be our friend. Prayer is how we talk to and grow closer to God. With adult help, each Sunbeam should prepare to pray at Club, Sabbath School or School.

Completes requirements for Friend of Jesus #3. _____



Family Connection

OVERVIEW: **Patience is a necessary part of life.** Instead of getting frustrated when you face a difficult situation, patience helps you respond the right way—without getting upset or losing your temper. This makes everyone's life better at school, at home, while driving in the car, or when checking out at the grocery store.

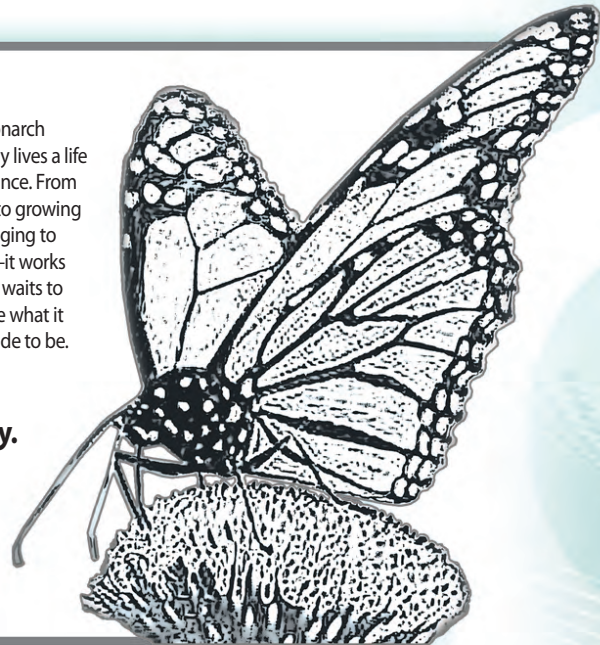
Patience

Definition: Waiting without getting upset

I WILL...

- Wait my turn.
- Not complain when I don't get my way.
- Accept what cannot be changed.
- Use my time wisely.
- Try and try again.

The monarch butterfly lives a life of patience. From eating to growing to changing to flying—it works while it waits to become what it was made to be.



CHARACTER QUIZ:

1. Describe the kind of attitude you should have while you wait: _____
2. A patient person... **a.** cuts in line. **b.** takes his or her turn. **c.** nags and complains. **d.** gives up easily.
3. What are three ways a caterpillar/butterfly shows patience? _____ _____ _____
4. A patient person looks for something useful to do while he or she waits: TRUE? or FALSE?
5. When do you have to be patient at home? _____

This page may be copied and distributed for educational use.

© Copyright MMXIII by Character First. 877.357.0001 www.CharacterFirstEd.com



Adventurer Law

Recite and accept the Adventurer Law.



Fill in the blanks and discover how much Jesus loves you.



loves _____ very much and
(my name)

wants me, _____, to be happy. That's
(my name)

why He came as a



and



for me. Now _____

(my name)

can be a



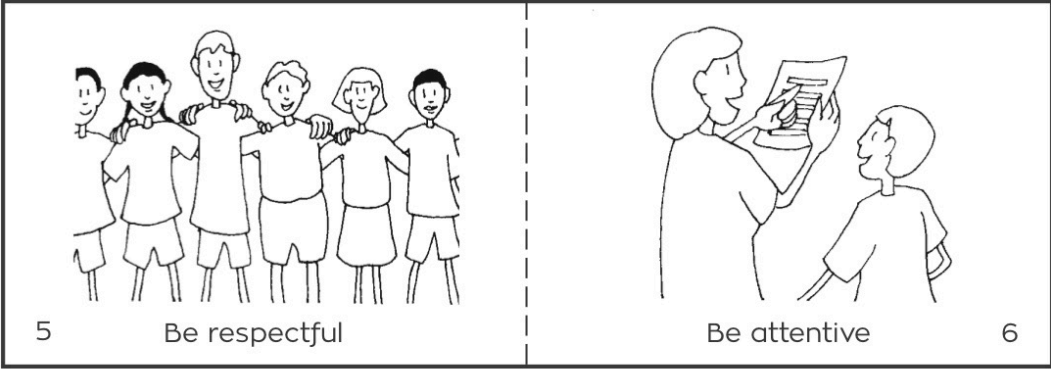
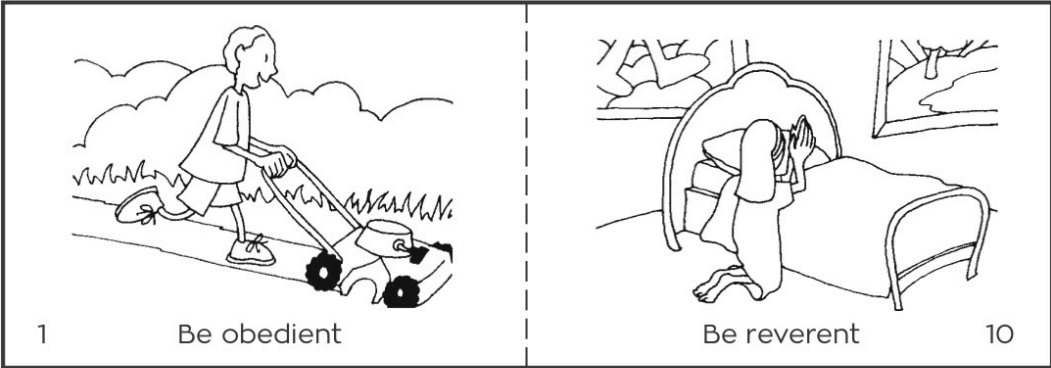
and help other people be






too.



Using the pictures on the next two pages, make an Adventurer Law Booklet.

1. Cut on the black lines.
2. Fold on the dotted lines.
3. Put the pages together.
4. Staple on the dotted lines.



	 <p>My Adventurer Law</p> <p>Jesus can help me to ...</p>
--	---

 <p>9 Be thoughtful</p>	 <p>Be pure 2</p>
---	--

 <p>7 Be helpful</p>	 <p>Be kind 4</p>
---	---

God's Plan to Save Me



A. Create a story chart or lapbook showing Jesus':

- Birth
- Life
- Death
- Resurrection

OR

the Bible stories you are studying in school or Sabbath School.

B. Use your story chart or lapbook to show someone the joy of being saved by Jesus.

I showed _____ !

S T E P B Y S T E P

Sunbeam Bible Story Chart

The diagram shows a horizontal timeline of Bible stories represented by a row of 16 small boxes. The first box is white and labeled 'Creation'. The next three boxes are grey and labeled 'The First Sin'. The next three boxes are white and unlabeled. The next three boxes are grey and unlabeled. The next three boxes are white and unlabeled. The last box is white and labeled 'Heaven'. Four sunbeams originate from the top of the chart and point to four larger boxes above the timeline, labeled 'Jesus' Birth', 'Jesus' Life', 'Jesus' Death', and 'Jesus' Resurrection'.



Jesus' Birth

Jesus, God's Son, came to earth
as a baby to help people.



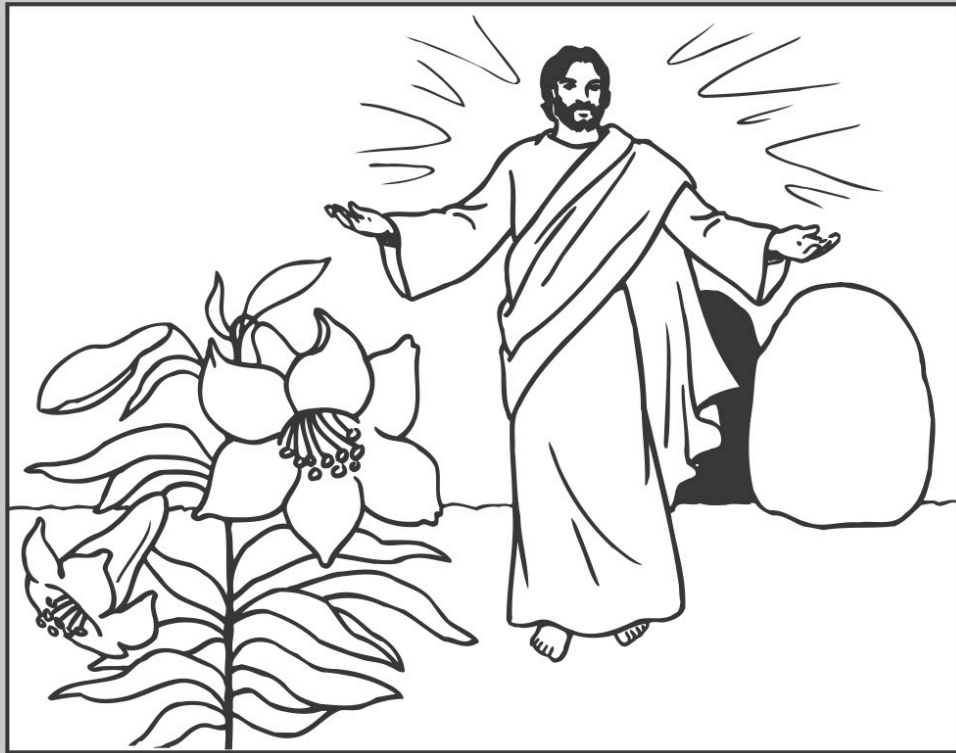
Jesus' Life

Jesus showed people how much He loves them. He showed how happy we can be if we obey Him.



Jesus' Death

Jesus let evil men kill Him on a cross because He wanted to take away our sins.



Jesus' Resurrection

Jesus came back to life after three days.
He is in heaven now, watching over us.